



Lancaster University
Management School

Engagement Showcase

Ahmed Kheiri

9 December 2020

Real-World Industry Project Introduction

Employability

Employability is currently an important focus for universities

It influences the rankings of universities which drive student recruitment in the UK

Teaching and assessing real-world skills, are undoubtedly important for future employability



Why engage with industry for teaching and assessment purposes?

- Improving employability of our students
- Increasing student engagement and enthusiasm for topic
- Demonstrating relevance to practice
 - Students as ‘consultants’ or ‘experts’
- Enabling teaching-based research?
 - Students as ‘researchers’



Real-World Industry Project ORTEC Project for MSCI517

Project-based assessment tends to be fairly large scale, covering all aspects of the identified learning outcomes, with a fairly generous maximum timeframe set for completing them

For MSCI517, the project tasks were designed such that they can be solved by the majority of the students but generate challenges for more advanced students

The project included open-ended elements to encourage students



Real-World Industry Project Pros

The students were operating in an environment that is close to reality

The project gave the students a strong sense of accomplishment as they have generated a real application

The students were motivated to complete the work for grade, in addition to the fact that they appreciated the opportunity to connect their creativity with programming



Real-World Industry Project Cons

Students are penalised if they are unable to spend enough time completing the tasks

Project-based assessment is more vulnerable to plagiarism than other assessment methods



Knowledge Transfer Partnership

- The Knowledge Transfer Partnership scheme helps businesses in the UK to grow
- The academic partner will help to develop the project, provide academic input and recruit an associate
- The scheme can last between 12 and 36 months



Knowledge Transfer Partnership Optrak

- Developing and implementing techniques for routing problems

OPTRAK
VEHICLE ROUTING SOFTWARE



The University of
Nottingham

Innovate UK



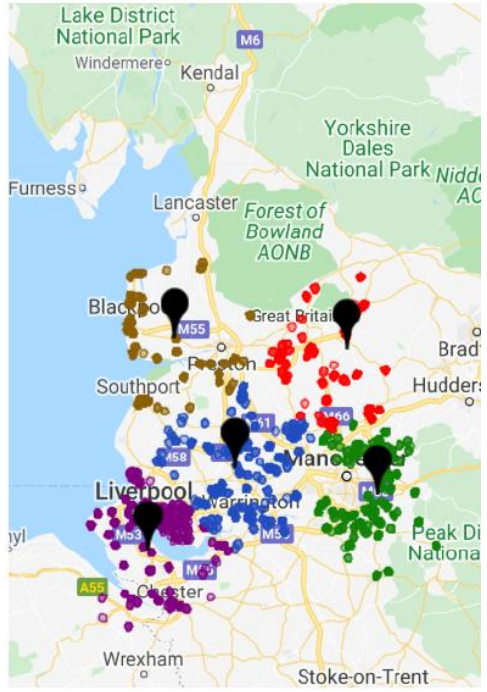
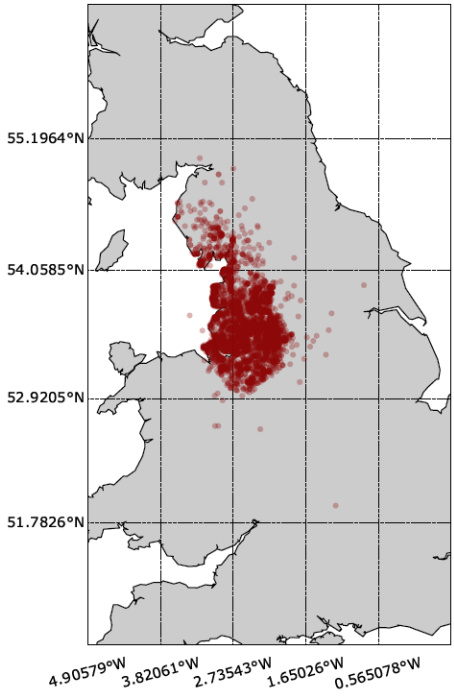
Consultancy Service

- Consultancy is the provision of expert advice based on existing knowledge
- The University provides a managed service for consultancy, supporting pricing, negotiating, contracting and invoicing



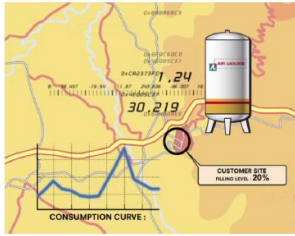
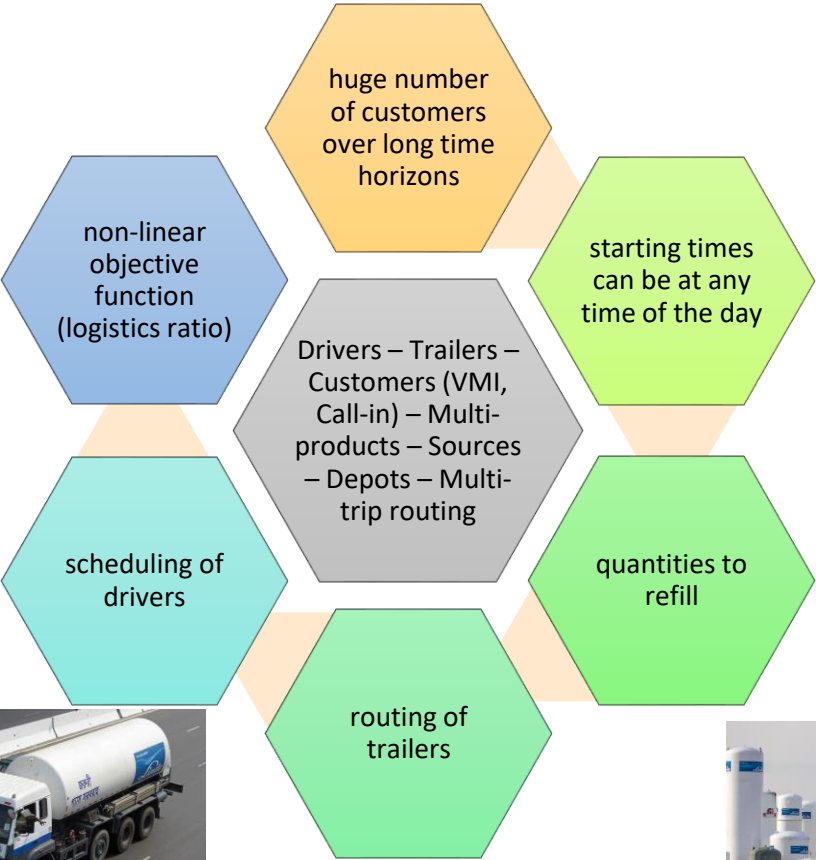
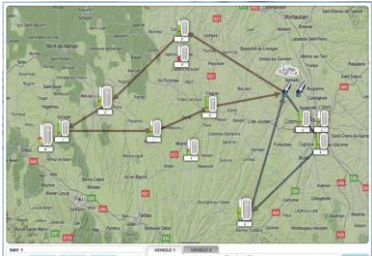


Consultancy Service NWAA – Project 3





Consultancy Service Linde



Benefits

- Knowledge exchange
- Creating impact
- Research publications
- Extending networks
- Informing new research ideas



References

- <https://www.gov.uk/guidance/knowledge-transfer-partnerships-what-they-are-and-how-to-apply>
- <https://www.lancaster.ac.uk/research/research-enterprise-services/consultancy/>





Lancaster University
Management School

Thank you for your attention!
